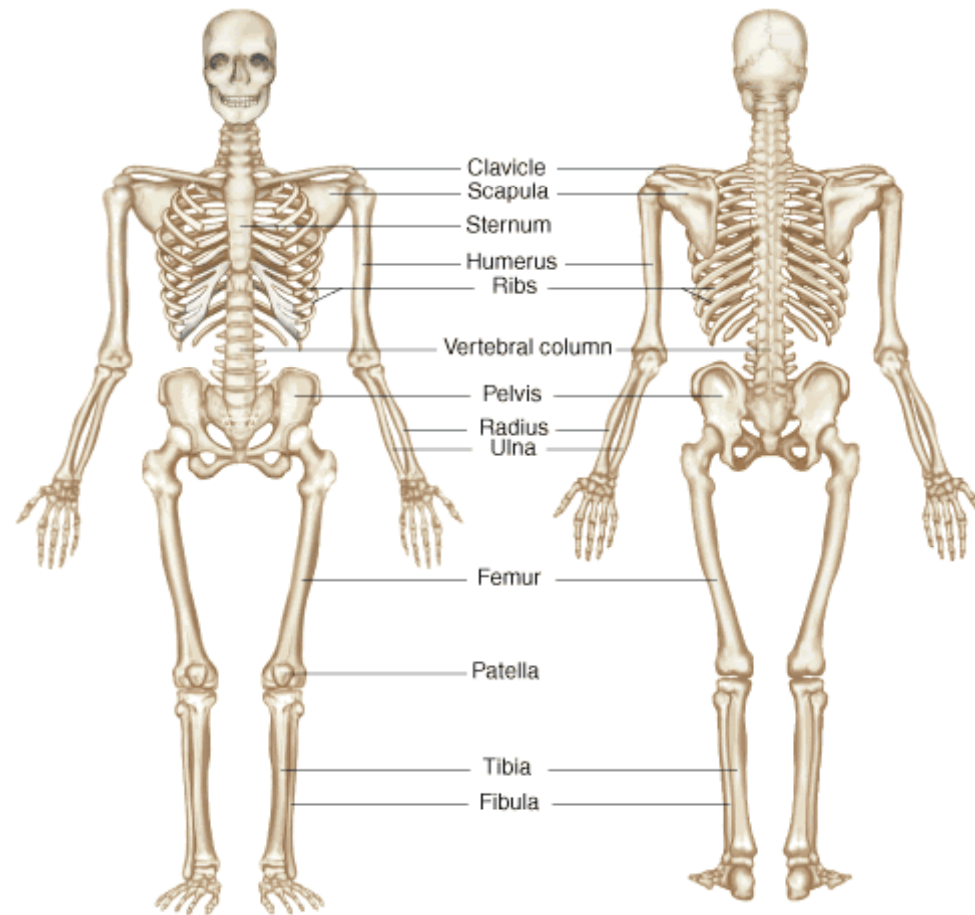


# Human Anatomy and Physiology

## Level 2 Human Anatomy and Physiology



# Human Anatomy and Physiology

## Level 2 Human Anatomy and Physiology

Looking for an introduction to human anatomy and physiology? Keen to understand how it all works? Then this is the course for you.

It covers everything from skeletal system, muscles the nervous and digestive system. This course is ideal for those considering further study in the sciences or those who want an overview of the human body.

The course is split into bite sized sections so studying can fit easily into a busy life. You will also have a tutor available to help, whenever needed.

### Entry Requirements:

Entry on to this course is open to everyone.

At Start Learning we believe that everyone should have the opportunity to expand their knowledge and study further, so we try to keep our entry requirements to a minimum.

**Full Course Cost: £285** + £4.95 (Delivery)

**50% Deposit + Postage** = £142.50 + £4.95 (This is paid when signing up)

**First Instalment** = £47.50 (This is paid 1 month after signing up)

**Second Instalment** = £47.50 (This is paid 2 months after signing up)

**Third Instalment** = £47.50 (This is paid 3 months after signing up)

Call us on **0800 075 1222** or email us at [info@start-learning.co.uk](mailto:info@start-learning.co.uk) if you would like to set up a payment plan.

### Qualifications & Awarding Body

#### What qualifications will I gain through the course?

Level 2 Award in Human and Physiology. At the end of this course successful learners will receive a Level 2 NCFE Award certificate of achievement. That means that it is independently accredited at a level of learning equivalent to level 2 on the National Qualifications Framework (NQF) for England, Wales and Northern Ireland"

#### Awarding Body Information

NCFE is recognised as an awarding body by the qualification regulators ('regulators') for England, Wales and Northern Ireland. The regulators are the Office of the Qualifications and Examinations Regulator (Ofqual) in England, the Department for Children, Education, Lifelong Learning and Skills (DCELLS) in Wales and the Council for Curriculum, Examinations and Assessment (CCEA) in Northern Ireland.

<http://www.ncfe.org.uk/>



## Course Contents

**Unit 1 - Introduction to the Human Body:** Human Body Structure - Body functions - Life Process - Anatomical Terminology

**Unit 2 - Cells, Tissues and Membranes:** Cell Structure and Function - Body Tissues - Membranes

**Unit 3 - Skeletal System:** Functions of the Skeletal System - Bone Tissue - Bone Development and Growth - Classifications of Bones - Divisions of the Skeleton

**Unit 4 - Muscular System:** Functions of the Muscular System - Structure of the Skeletal Muscle - Muscle Types - Skeletal Muscle Groups

**Unit 5 - Nervous System:** Functions of the Nervous System - Nerve Tissue - Organisation of the Nervous System

**Unit 6 - Endocrine System:** Introduction to the Endocrine System - Characteristics of Hormones - Endocrine Glands

**Unit 7 - Cardiovascular System:** Introduction to the Cardiovascular System - Heart - Blood

**Unit 8 - Lymphatic System:** Functions of the Lymphatic System - Components of the Lymphatic System

## Course Contents cont.

**Unit 9 - Respiratory System:** Introduction to the Respiratory System - Mechanics of Ventilation - Respiratory Volumes and Capacities - Conducting Passages

**Unit 10 - Digestive System:** Functions of the Digestive System - General Structure - Regions of the Digestive System

**Unit 11 - Urinary System:** Functions of the Urinary System - Components of the Urinary System

**Unit 12 - Reproductive System:** Introduction to the Reproductive System - Male Reproductive System - Female Reproductive System

## Next Steps?

Why not try?

**Level 3:** Human Anatomy & Physiology

**Level 3:** Health & Social care

**Level 4:** Community, Mental Health and Psychiatry

**Level 4:** Counselling and Psychotherapy

**Level 4:** Cognitive behavioural Therapy